

The role of a JSC with Skills Insight and ForestWorks working in partnership

Michael Hartman, Skills Insight CEO

Michael Borowick, ForestWorks CEO





Skills Insight is not-for-profit, government funded, industry-led, Jobs and Skills Council.

- Built on the foundation of Skills Impact's people, values, systems and relationships.
- Continuing our collaboration with ForestWorks and MINTRAC, as valued partners.
- Member-based organisation, stakeholder networks guide the work.
- Focused on solutions to skills and training challenges across Australia.
- Working with a group of industries with a strong presence in regional, rural and remote Australia.
- **We listen!** Share your views on skill challenges, opportunities and successes.

Our Role as a JSC



- Investigating skills challenges and opportunities and identifying possible solutions.
- Supporting training delivery through developing national skill standards and support materials.
- Working with RTOs to support training when and where it is needed.
- Promoting good VET policy, solutions to embedded skills challenges and a more collaborative way of working with stakeholders across the national skills ecosystem.
- Supporting industry involvement in all parts of the skills ecosystem.

Our Partnership with ForestWorks

- Collaboration is at the core of Skills Insight's activities.
- We work with industry focused skills organisations to deliver the JSC work. ForestWorks and MINTRAC are integrated into the JSC operations.
- ForestWorks has an enduring and strong connection working with a range of industries under this JSC's coverage.
- ForestWorks will continue project activity to address industry skills and workforce needs as part of the JSC program.



How to be involved

Become a Member

- Members help establish the Formal Networks and Stakeholder Forum.
- These are volunteer governance functions to review and sign off on the work of the JSC.

Projects are where the action is!

- There are various opportunities for all stakeholders to have their say – over the phone, in workshops, through email or the online feedback hub.
- Work on solutions to improve skills and training.
- Consensus is a key objective.

Visit skillsinsight.com.au

To apply for membership, input into projects or the workforce plan, and subscribe to newsletters.

Industries we work with



Textiles, Clothing and Footwear

► Supported by MINTRAC

► Supported by ForestWorks



Animal Care and Management



Aquaculture and
Wild Catch



Broadacre cropping



Ecosystem management,
conservation, landscaping and
gardening



Forest management and
harvesting ►



Furnishing and other
manufacturing ►



Horticulture



Livestock farming



Meat, poultry, seafood
processing ►



Pulp, paper, packaging,
hygiene ►



Racing and breeding



Timber, wood processing and
building solutions ►

Our work



Working with all stakeholders,
supporting the voice of industry



Working out how to
address skill challenges



Supporting delivery of
training to national
standards

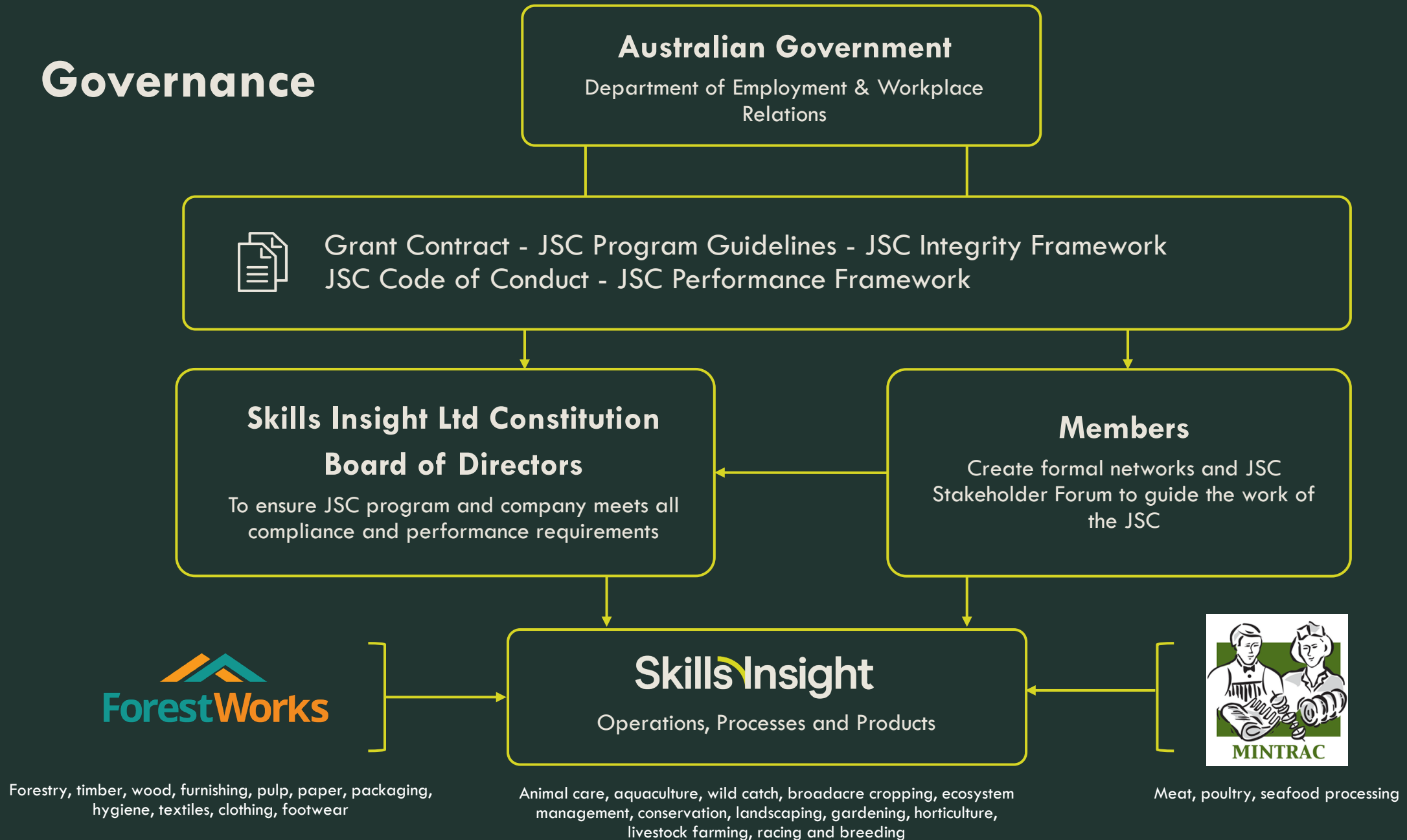


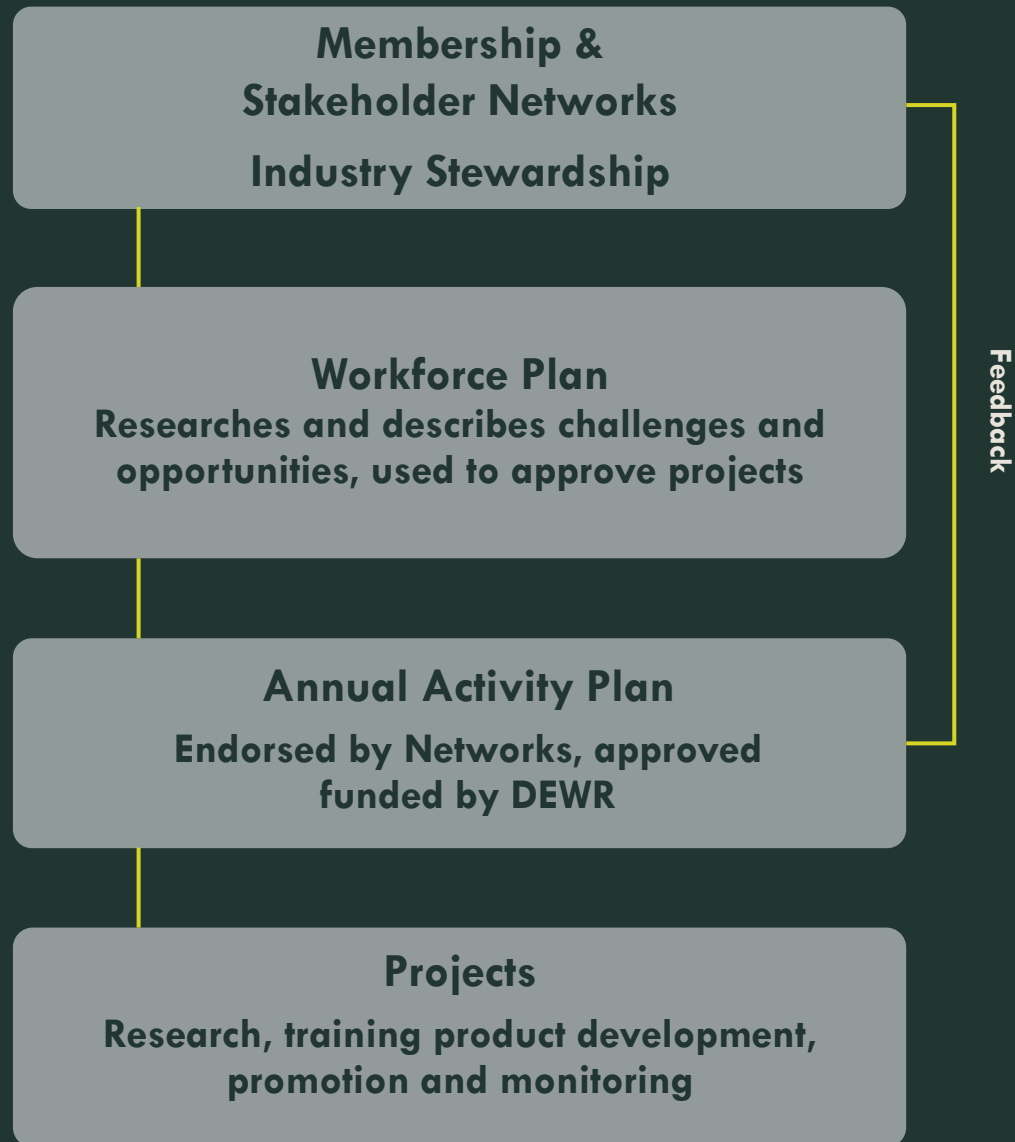
How to improve equity
for all and outcomes for
First Nations people



Supporting skills opportunities
and innovations for climate-
smart practices

Governance



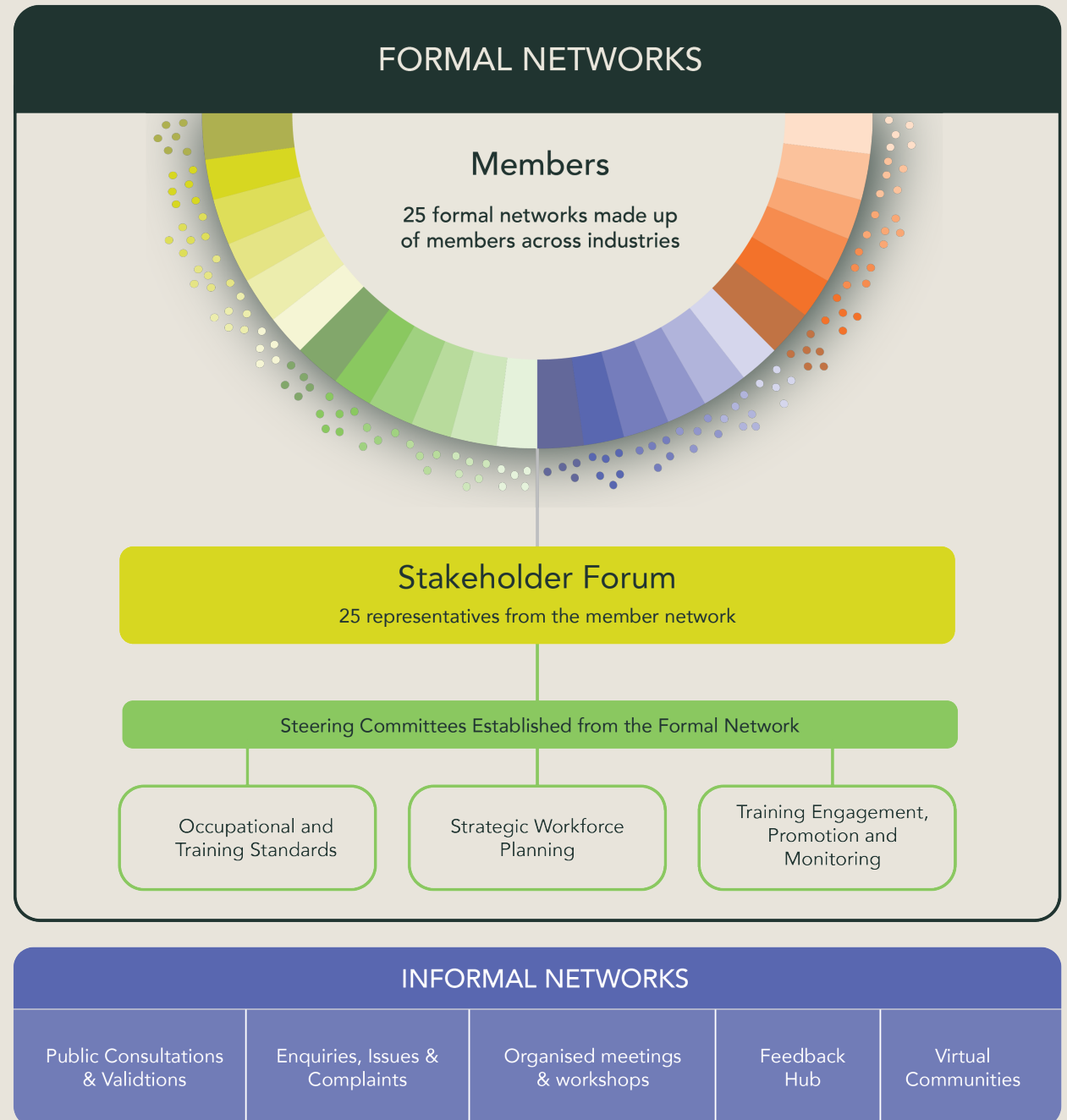


Skills Insight

- Workforce Plan documents industry and workforce information, skills challenges and opportunities.
- A living document that is updated to reflect new information and intelligence.
- It guides future JSC activities.
- Insights and advice are shared with governments, Jobs and Skills Australia, and State and Territory Training Authorities, RTOs and Regulators.

Membership & Stakeholder Networks

- Collaboration is the cornerstone of Skills Insight's approach.
- Our work is guided by a comprehensive arrangement of stakeholder networks.
- Members make up the formal network and also contribute to a Stakeholder Representative Forum.



Membership & Stakeholder Networks

- Each network nominates a representative and a proxy for the Stakeholder Representative Forum.
- Up to fifteen of the Formal Networks are industry sector specific
- Up to ten are drawn from the well-established networks of organisations that are large employee or employer representative bodies

Industry Sectors

- Animal care and management
- Aquaculture and wild catch
- Broadacre cropping
- Ecosystem management, conservation, landscaping and gardening
- Forest management and harvesting
- Furnishing and other manufacturing
- Horticulture
- Livestock farming
- Meat, poultry, seafood processing
- Pulp, paper, packaging, hygiene
- Racing and breeding
- Textiles, clothing and footwear
- Timber, wood processing and building solutions

Organisations

- Australian Forest Products Association
- Australian Meat Industry Council
- Australian Meat Industry Employees Union
- Australian Workers Union
- CFMEU Manufacturing
- Indigenous Land and Sea Council
- National Farmers Federation
- Racing Australia
- Seafood Industry Australia

Jobs and Skills Councils

- One of 10 JSCs
- Collaboration takes place across all JSCs



BuildSkills Australia

Skills Insight



SkillsEQuipped




Workforce Plan



- A key output of the workforce planning process.
- First edition of this annual JSC product.
- Aims to identify and address workforce challenges and opportunities within the industries we work with.
- Centrepiece of Skills Insight's work and paves the way for the Department's approval of funded activities.

Your input will help determine what work activities will be a priority for our first year operating as a JSC. Your feedback is also important for informing future versions of the workforce plan and proposed activity plan.

skillsinsight.com.au/workforce-plan



ForestWorks is an industry owned not-for-profit organisation offering skills development services for the forest, wood, paper, timber, textiles, clothing, footwear and furnishings industries.

- Our terms of reference is to ensure a skilled, progressive and resilient workforce exists in all our industries.
- This is achieved through partnership with Skills Insight, government, industry, unions, workers and training providers.
- We work across our industry segments to develop;
 - Skills and Training models, resources, frameworks and qualifications
 - Strategies and assistance to industry for attracting and developing new workers
 - Strategies and assistance to upskilling existing workers
 - Supporting workers along their career journey through retraining, recognition of prior learning, cross skilling and succession planning.

ForestWorks

- ForestWorks has 40+ years of experience. This empowers us with experience and insight to offer advice and services to our stakeholders that is purpose built, comprehensive and extensive.
- Dedicated to collaborations that drive innovation and meaningful change for industry via stakeholder engagement, workforce planning, training package development and industry stewardship.
- Through partnership with Skills Insight, we can leverage our joint resources, share industry insights, and develop initiatives that address specific skills needs in the industries we serve.



The ForestWorks JSC Team



Nina Laxmandas

*Stakeholder
Engagement*

Textiles, Clothing and
Footwear



Tim Cleary

*Stakeholder
Engagement*

Furnishings



Tamara Speldewinde

Stakeholder Engagement

Forestry and Pulp
and Paper



Katrina Teisini

*JSC & ForestWorks
Operations Manager*

Why be involved?

Projects are where the action is!

- All stakeholders can participate in informal discussions, formal working groups, document feedback, survey opportunities and forums.
- Be on the front line of driving high – quality outcomes for the vocational sector, learners and businesses.

Industry and Stakeholder Voice

- Opportunity to be a part of a tripartite arrangement of employers, unions and governments to find solutions to skills and workforce challenges.



Contact Nina Laxmandas

To clarify, query or ask about how you can be involved with the JSC, contact Nina Laxmandas

nlaxmandas@forestworks.com.au

0439 389 920



Please visit our
website for
more details

skillsinsight.com.au

Follow & tag us

A screenshot of the Skills Insight website. The background is a dark image of a horse and a plant. A white modal window titled "Subscribe" is open in the center. The modal has a close button (X) in the top right corner. Inside the modal, there's a heading "Subscribe to news and updates". Below it are input fields for "First name*", "Last name*", and "E-mail*". Underneath is a section "Subscribe me to:" with a list of checkboxes. The "General News" checkbox is checked. The other checkboxes are: "Agriculture, Horticulture, Conservation & Land Management", "Animal Care & Management", "Aquaculture & Wild Catch", "Forestry & Timber", "Furnishing", "Meat Processing", "Pulp & Paper Manufacturing", "Racing", and "Textiles, Clothing & Footwear". At the bottom of the modal is a dark green "Submit" button. Below the button, there's a small text: "We're committed to your privacy. For more information, check out our [privacy policy](#)." In the top right corner of the website, there are social media icons (Twitter, LinkedIn, Home, Facebook) and a "Subscribe" button with a bell icon and a search icon. In the top left of the website, there's the Skills Insight logo and a "Home" link. In the top right of the website, there are links for "Projects", "Contact", and "News". In the bottom left of the website, there's a circular "About us" button with a hand icon pointing to it. In the bottom right of the website, there are the Skills Insight and ForestWorks logos.